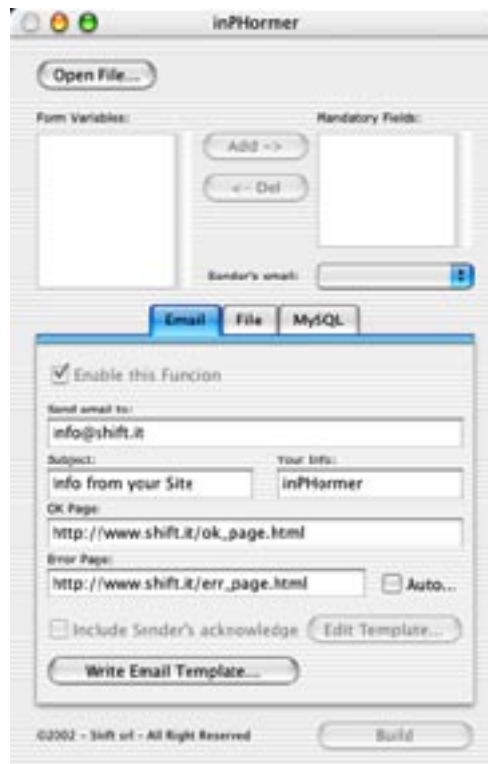




# inPHormer



## What is?

inPHormer is a small software used to automatically build a PHP file that process an HTML form. You've just to open the HTML form. The program scans the form and extract all the fields names from it.

You'll have then to fill some information and then press the Build button to create the PHP file that will manage your form.

## What I need?

inPHormer works on any Mac using MacOS 9.x with carbon lib or MacOS X. Obviously, you must have access to a domain that supports PHP to have your forms working.

## I have to pay?

inPHormer is shareware (just \$20).

Soon you'll have a page where you can register the software and you'll receive your serial Number. In any case, the program has no limitations, you can use it also if you don't have a registration number.

©

All the rights belong to:

**Shift srl**

Via Leone Leoni, 7  
22100 - Como (CO)  
Italy

**<http://www.shift.it/inphormer> - [inphormer@shift.it](mailto:inphormer@shift.it)**

You can distribute this software without permission, but you cannot modify the program and you've to distribute it with this manual.



# inPHormer

## How it Works

First of all, you've got to have a HTML form.

When you've got the form, you can launch the program.

In the program window, click on '**Open...**' button and select the form you want to use.

The program will show all the fields in the left list.

From that list you can choose the mandatory fields in two ways. You can select and press '**Add->**' button or you can double-click on the field name.

All the mandatory fields will be inserted in the right list.

With the **Sender's email** popup you can specify a field where the user will insert his email address. If you use this field, the generated PHP file will check for a "@" symbol in that field.

In the **Send email to** field you have to insert the email address where you'll receive all the form data.

**Subject** is where you write the subject for the email.

**Your Info** is the header of the email message.

**Ok Page** is the page called by the PHP file if the form is processed correctly.

**Error Page** is the page called by the PHP file if the form has something wrong (like incorrect email address or a mandatory field not filled)

**Include Sender's acknowledge** is a check box enabled only if you select a field in the Sender's email popup. If you select this check box, the PHP file will send an acknowledge message to the user. With the **Edit** button you can write the message the user will receive. In that window, you can also insert data from the form, simply selecting the form field from the popup and pressing Insert button.

**Write Email Template** button is used to format the email you'll receive. By default, inPHormer builds a simple email containing all the form fields, but you can write what you want in that window. You can also insert data from the form, simply selecting the form field from the popup and pressing Insert button.

**Build** button is used to build the PHP file. It also reminds you to insert the PHP file name in the form ACTION.

When you've inserted the PHP file name in the form action, you've done. Simply put the HTML form and the PHP file on your site and enjoy your forms!

**Preferences** Under the **inPhormer** menu you have the **Preferences** command. It will show this window:



In this window you can specify the **Domain Name** and the default email address. You can also specify the default configuration to connect to a MySQL database.

With the last menu, you can specify the PHP version you use on your server.



# inPhormer

## File Tab

If you enable this feature, inPhormer will add a function to the PHP file that builds a standard CSV (Comma Separated Value) file with the data from the user. This function is useful when you want to import the file in a database for later processing.

If the file doesn't exist, it will be created and the data are added to the file automatically. You can leave the file on the server and download it once a week, for example, and in the file you'll have all the data compiled in that week.

Obviously, you have to set the directory where you save the file as `WRITABLE`, or the PHP will return an error.

If you specify only the file name in the field, the CSV file will be saved in the same directory of the PHP file, otherwise you have to specify the full path to the directory. In Mac OS X, for example, you can specify:

**`/Library/WebServer/Documents/myDir/myFile.txt`**

## MySQL Tab

This is a very useful feature of inPhormer.

In this Tab you specify the parameters to connect to a MySQL database (the parameters can be specified in the preference window).

Once you have the right parameter, you can press the **Connect** button to connect to the database, then, using the **Table** pop-up menu, you select the database table to work with. By selecting the table pop-up, all the database fields are listed.

The other thing you have to do is to associate the form fields with the database fields using the popup-menu on the right of the Connect button.

If you don't need a field from the DB (eg. an autoincremental field), you can select it and remove from the list using the **Del. Row** button.



# inPHormer

## Known Issues

inPHormer works well, but there are known issues about it.

You must have a `<FORM> </FORM>` tag, or the program will not parse the form

You must have the field name between hyphens (like `<input type="text" name="email">`) or the program will not parse the form variables.

I don't know other bugs, but, if you find a problem, please, send me an email.